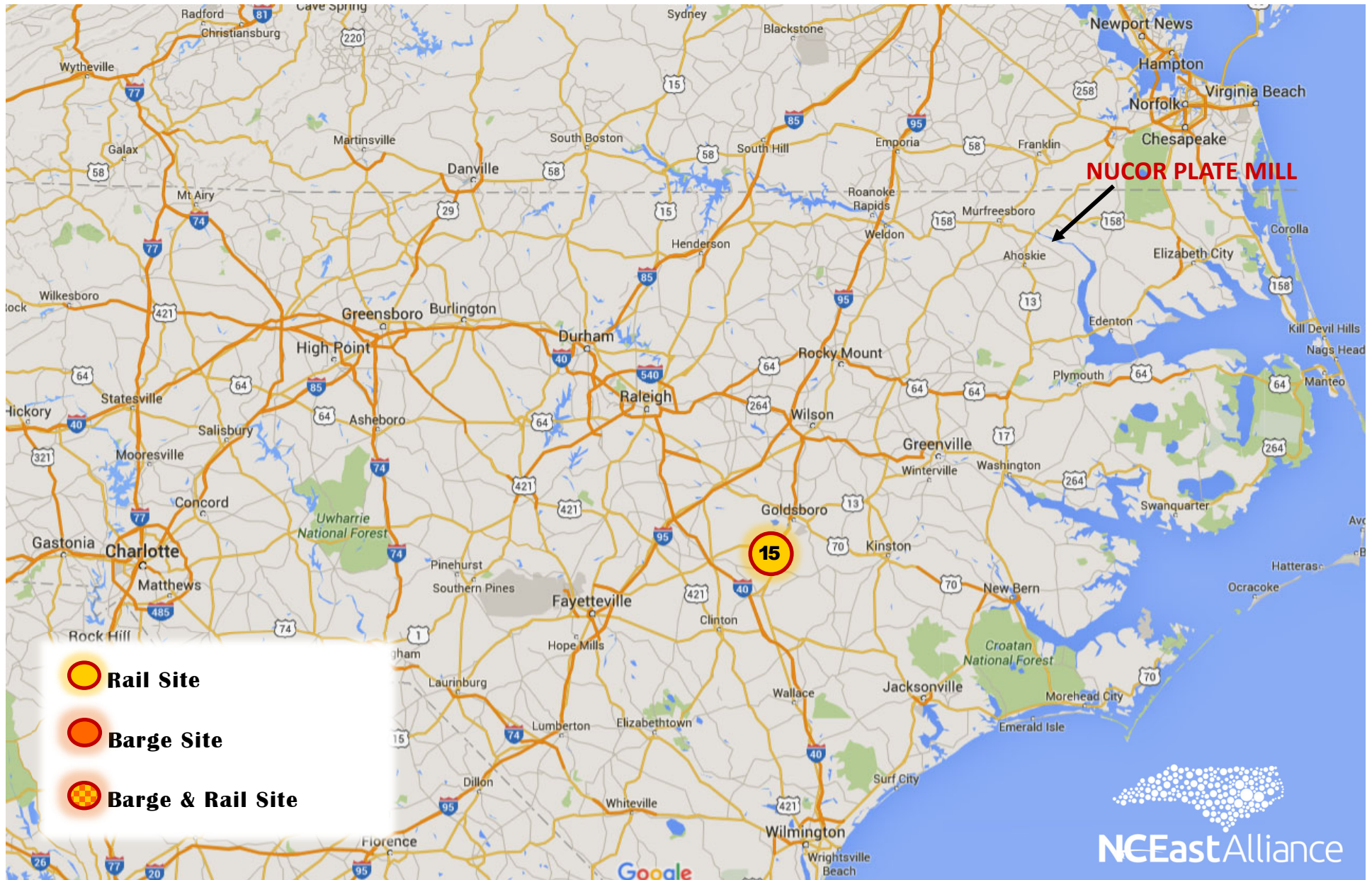


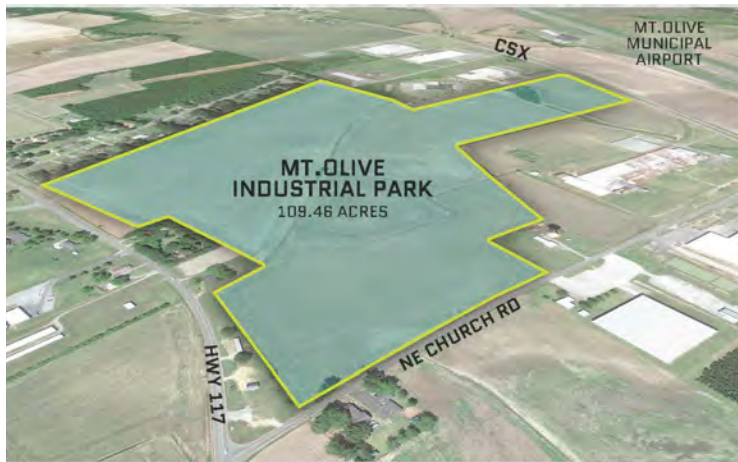
# MAJESTIC STEEL





# Mount Olive Industrial Park

Old Mt. Olive Hwy, Mount Olive, NC 28365



CONCEPTUAL LOT LINES,  
LOTS CAN BE COMBINED TO SUIT CLIENT'S NEEDS



## GENERAL INFORMATION

**Current Use:** Farming

**Sales:** \$25,000/ acre

**Lease:** N/A

**Acreage:** 107 Acres - Sub-Dividable

**Type of Location:** Industrial Park

**In City Limits:** Within Town's ETJ

**Building Type Allowed:** Industrial

## DESCRIPTION

Class A Industrial Park located in Mt. Olive. Zoned Industrial I. Surrounding properties: North and South, Industrial; East, farmland and West, Hwy 117 Alternate.

CSX runs along Old Mt. Olive Hwy, a spur access could be constructed to serve the park.

## INFRASTRUCTURE

**Electricity:** Duke Energy

**Natural Gas:** Piedmont Natural Gas

**Telecommunications:** AT&T

**Water:** Town of Mt. Olive - 10", 1.6 MG

**Sewer:** Town of Mt. Olive - 10" Gravity  
684,000 MGD available

## AIRPORTS

**Raleigh Durham International:** 70 mins.

**Mount Olive Municipal Airport:** 1 mins.

**Wayne County Executive Jetport:** 20 mins.

**Kinston Regional Jetport:** 31 mins.

**Pitt-Greenville Airport:** 55 mins.

## SHIPPING PORTS

**Wilmington:** 1 hour 45 mins.

**Morehead City:** 2 hours

## CURRENT TENANTS

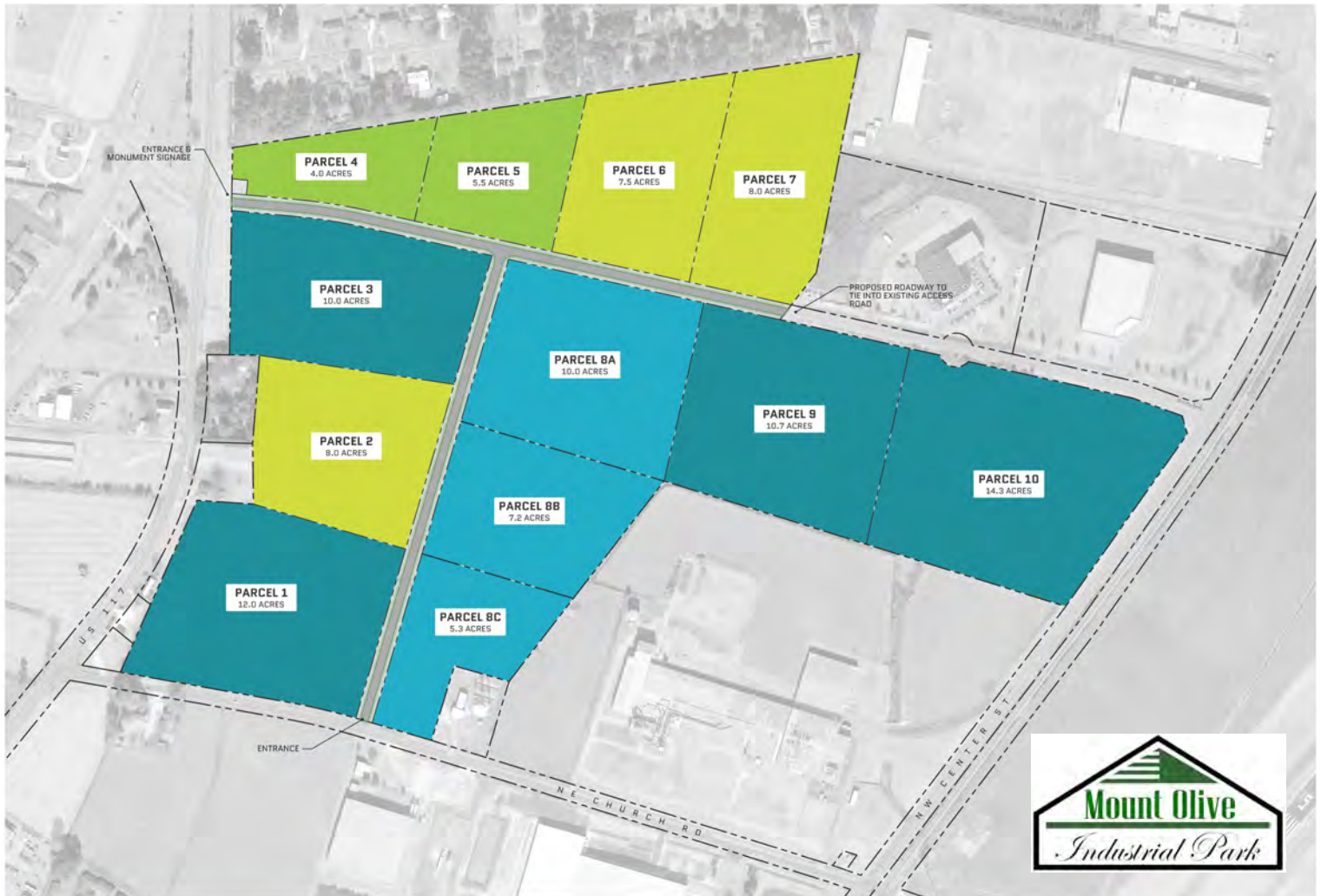
Mt. Olive Pickle, Series Seating, and Hwy 55 Burgers, Shakes and Fries (Andy's).





# Mount Olive Industrial Park

Old Mt. Olive Hwy, Mount Olive, NC 28365



CONCEPTUAL MASTER PLAN



**WAYNE COUNTY**  
DEVELOPMENT ALLIANCE



# Mount Olive Industrial Park

Old Mt. Olive Hwy, Mount Olive, NC 28365



CONCEPTUAL MASTER PLAN



**WAYNE COUNTY**  
DEVELOPMENT ALLIANCE





# Mount Olive Industrial Park

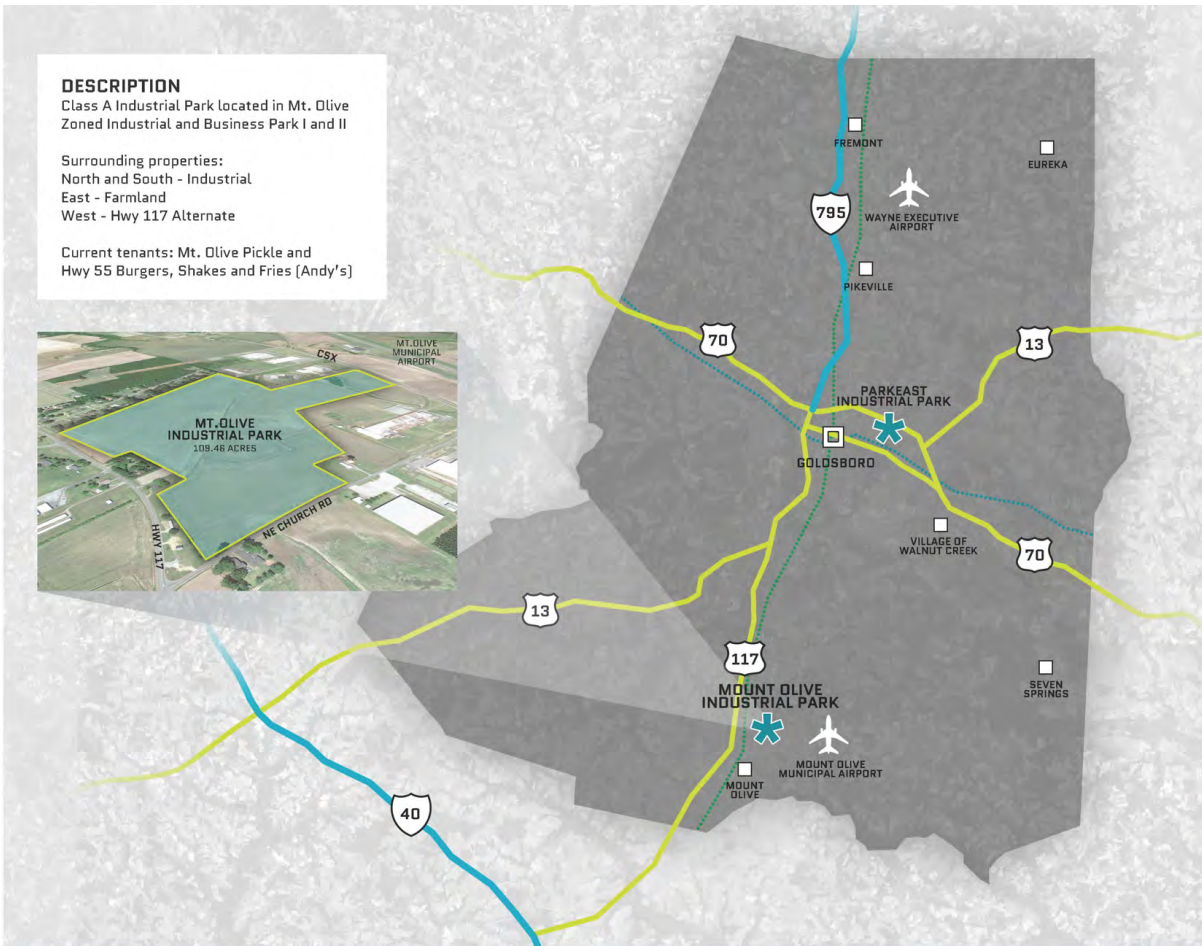
Old Mt. Olive Hwy, Mount Olive, NC 28365

## DESCRIPTION

Class A Industrial Park located in Mt. Olive  
Zoned Industrial and Business Park I and II

Surrounding properties:  
North and South - Industrial  
East - Farmland  
West - Hwy 117 Alternate

Current tenants: Mt. Olive Pickle and  
Hwy 55 Burgers, Shakes and Fries (Andy's)



## GENERAL INFORMATION

Former Use: Farm  
Sales: \$25,000/ acre  
Lease: N/A  
Available SF: N/A  
Acreage: 107 Acres sub-dividable  
Ceiling Height: N/A  
Dock Doors: N/A  
Type of Location: Industrial Park  
In City Limits: Within Town of Mt. Olive ETJ  
Shell/Spec: No  
Building Type: Industrial

## INFRASTRUCTURE

Electricity: Duke Energy  
Natural Gas: Piedmont Natural Gas  
Telecommunications: AT&T  
Water: Town of Mt. Olive - 10", 1.6 MGD  
Sewer: Town of Mt. Olive - 10" Gravity,  
684,000 MGD available

## ACCESS

Interstate 40: 10 min drive  
Interstate 795: 15 min drive  
Interstate 95: 50 min drive  
Highway 70: 20 min drive  
Highway 117: 5 min drive  
Raleigh Durham International: 70 mins  
Mount Olive Municipal Airport: 1 min.  
Wayne County Executive Jetport: 20 mins  
Kinston Regional Jetport: 31 mins  
Pitt-Greenville Airport: 55 mins

Port of Wilmington: 1 hour 45 mins  
Port of Morehead City: 2 hours

## LEGEND

INTERSTATE  
HIGHWAY  
CSX  
NORFOLK SOUTHERN

MT. OLIVE INDUSTRIAL PARK | REGIONAL CONTEXT MAP & SITE INFORMATION

309 E. Chestnut St. | [www.waynealliance.org](http://www.waynealliance.org) | 919.731.7700



WAYNE COUNTY  
DEVELOPMENT ALLIANCE