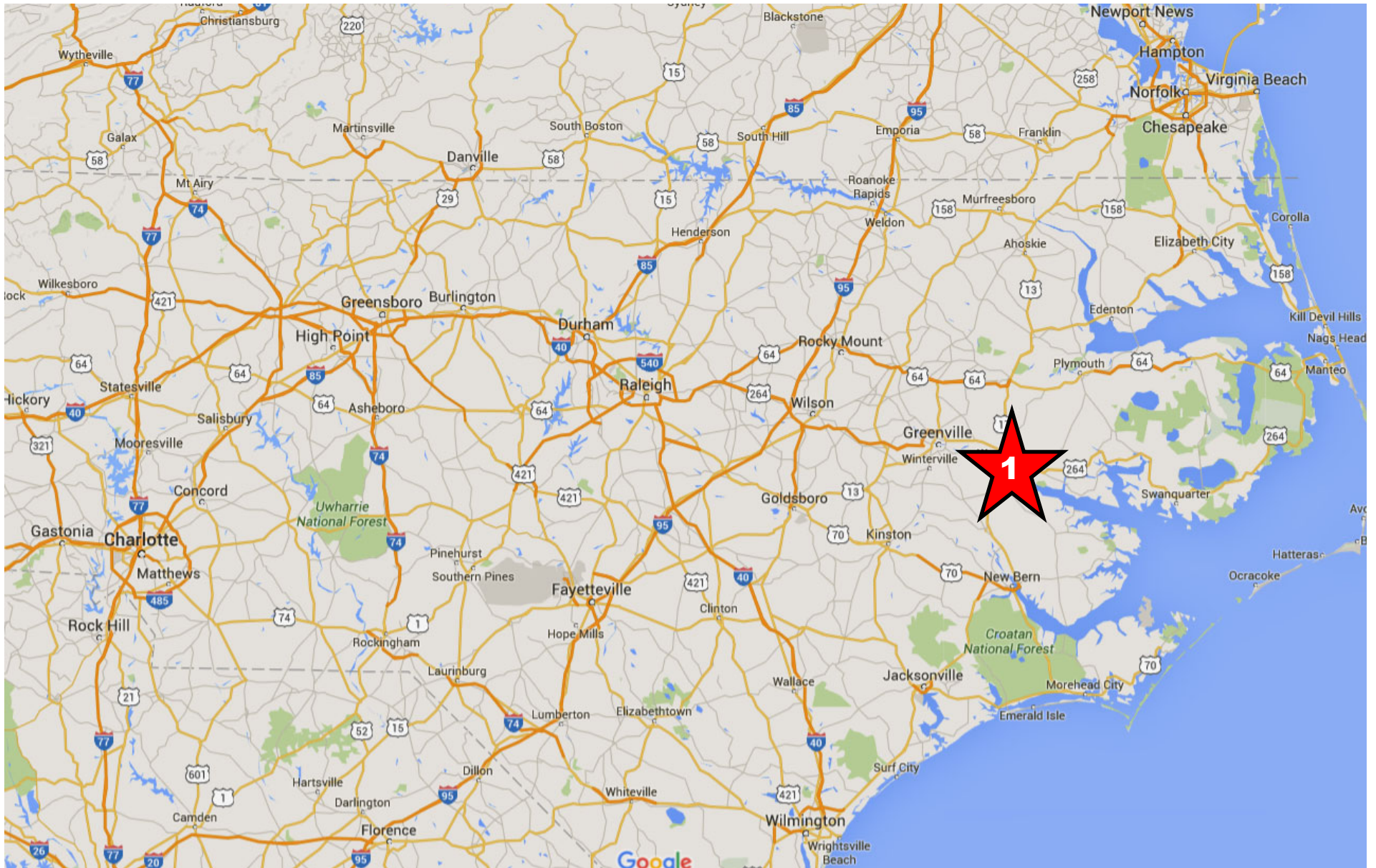


POWERMAX - USA

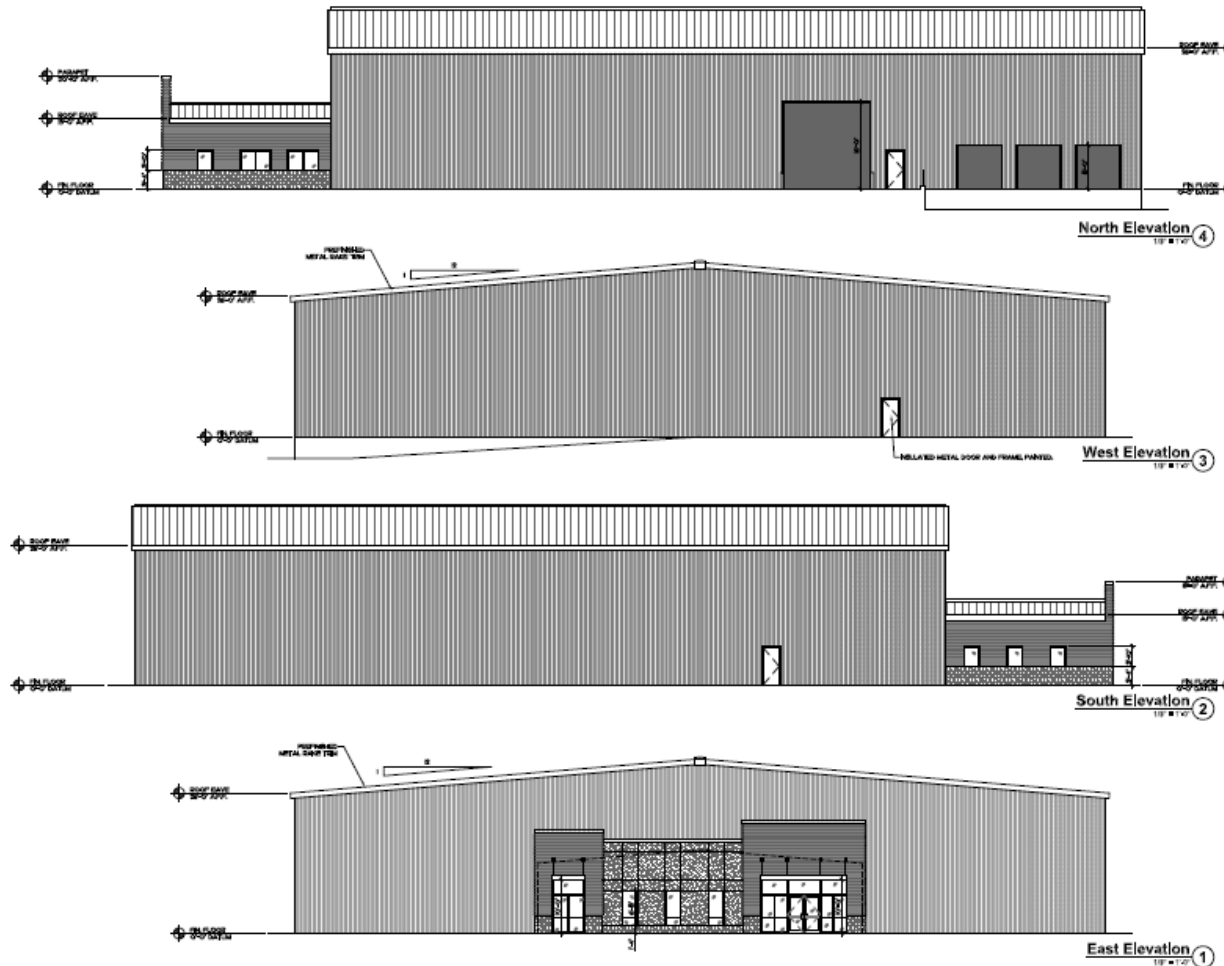
NCEast Project Max



BEAUFORT COUNTY NC COMMITTEE OF 100 INDUSTRY-READY BUILDING



**BEAUFORT COUNTY NC COMMITTEE OF 100
INDUSTRY-READY BUILDING**

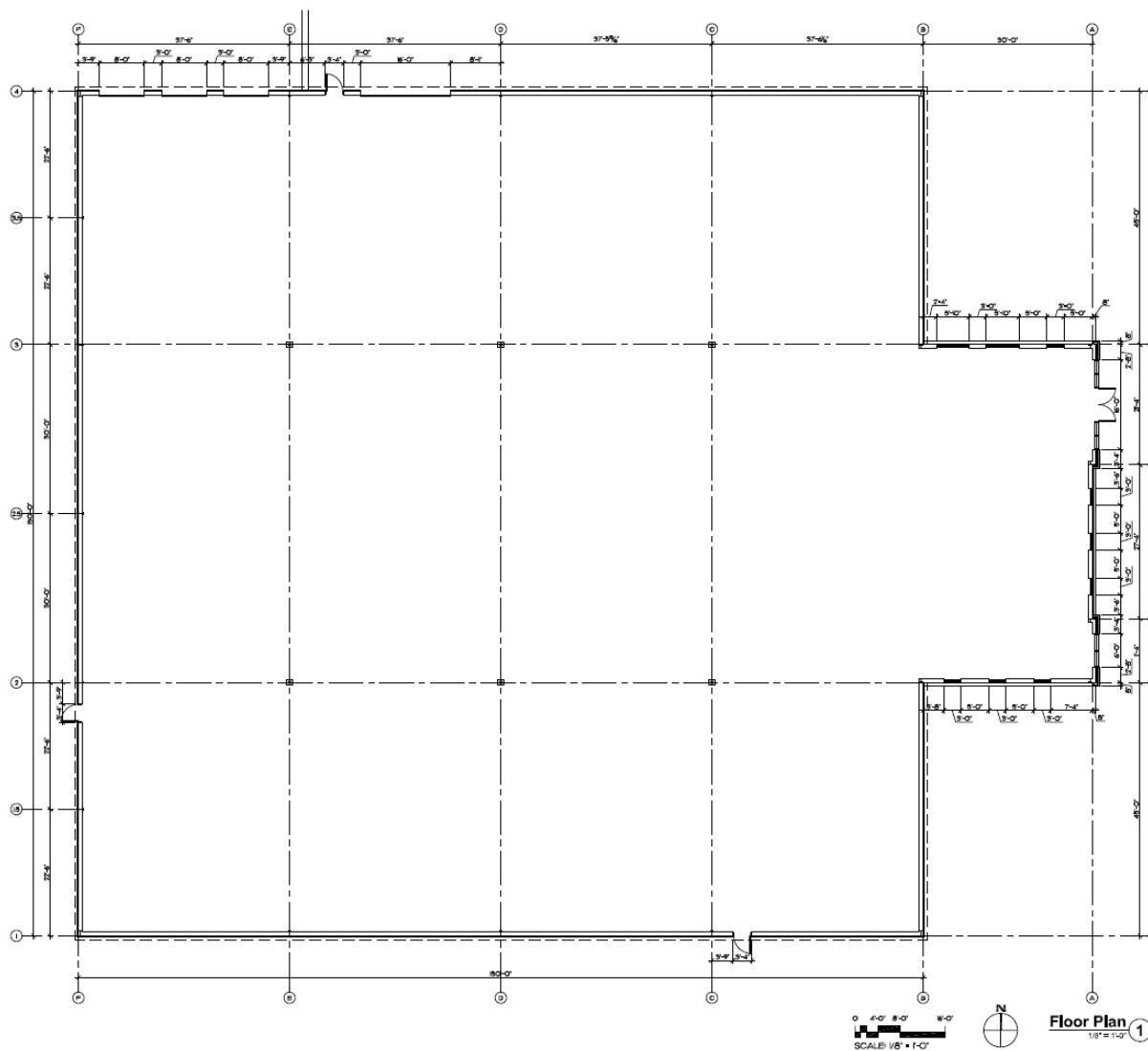


MHAworks
PLANNING ARCHITECTURE INTERIOR
1000 S. 10TH ST.
WILMINGTON, NC 28401
734.375.5833
www.mhaworks.com

STEEPS & TOWNS
ARCHITECTS
1000 S. 10TH ST.
WILMINGTON, NC 28401
734.375.5833
www.steeptowns.com

Industry Ready One
Beaufort County
Committee of 100 3rd Building
Pope Road
Washington, North Carolina

PHASE
Construction Documents
REVISIONS
ISSUE DATE: 06-06-2017
PROJECT: R 17011
DRAWN BY: MPJ
SHEET NUMBER
A2-1


STOCKS & TAYLOR

Industry Ready One

Beaufort County
Committee of 100 Shell Building
Page Road
Washington, North Carolina

THREE DIMENSIONS AND THE ACCOMPANYING SPACE ARE
 AND, BEING ONE OF THE MOST IMPORTANT QUALITIES
 THE IMPORTANCE OF THE ARCHITECT, THEY HAVE IN
 INFORMATION FOR A SPECIFIC PROJECT AND SHALL IN
 ORDER TO FORMULATE IN ALL CASES OF NEW PROJECTS
 WITHOUT THEIR OWN PERSONALITY OF THE ARCHITECT
 (ENLIGHTENING 2011)

SHEET NAME:
Floor Plan

PHASE:
Construction Documents

REVISIONS		

ISSUE DATE: 05-08-2017
PROJECT #: 17051
DRAWN BY: MPJ

SHEET NUMBER

A1-1

**BEAUFORT COUNTY NC COMMITTEE OF 100
INDUSTRY-READY BUILDING**

Industry-Ready Building specifications:

Size:	24,300 sq. ft. (Expandable to 48,600 sq. ft.)
Factory:	22,500 sq. ft.
Office:	1,800 sq. ft.
Site:	5 acres (additional 10 acres available)
Material:	Steel/Masonry
Condition:	New – Completed December 2017
Price:	\$1,395,000
Lease:	\$3.46/SF/Year N3
Zoning:	Industrial

**BEAUFORT COUNTY NC COMMITTEE OF 100
INDUSTRY-READY BUILDING**

Industry-Ready Building specifications:

Eaves:	26 feet
Floor:	6 inches reinforced concrete
Bay Spacing:	45' x 37.5' & 60' x 37.5
Walls:	Insulated Metal
Roof:	Insulated Metal
Truck bays:	3 dock high, 1 drive-in

**BEAUFORT COUNTY NC COMMITTEE OF 100
INDUSTRY-READY BUILDING**

Industry-Ready Building specifications:

Lighting:	LED + Transom skylights
Electrical:	480 V/4 Phase
Sprinkler:	100% Wet
Utilities:	City of Washington
Telecom:	SuddenLink
Gas:	Piedmont Natural Gas

BEAUFORT COUNTY NC COMMITTEE OF 100 INDUSTRY-READY BUILDING



BEAUFORT COUNTY NC COMMITTEE OF 100 INDUSTRY-READY BUILDING



BEAUFORT COUNTY NC COMMITTEE OF 100 INDUSTRY-READY BUILDING



BEAUFORT COUNTY NC COMMITTEE OF 100 INDUSTRY-READY BUILDING



BEAUFORT COUNTY NC COMMITTEE OF 100 INDUSTRY-READY BUILDING



BEAUFORT COUNTY NC COMMITTEE OF 100 INDUSTRY-READY BUILDING



BEAUFORT COUNTY NC COMMITTEE OF 100 INDUSTRY-READY BUILDING



BEAUFORT COUNTY NC COMMITTEE OF 100 INDUSTRY-READY BUILDING

