



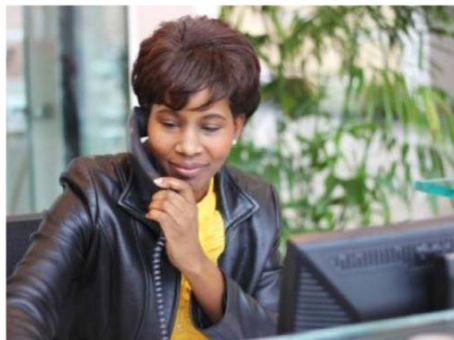
DEACS Services

Sustainability in Manufacturing
June 22, 2017



Division of Environmental Assistance and Customer Service

- Non regulatory
- No cost-permit; compliance technical assistance
- Engineers, chemists, environmental specialists





Permit Assistance

- Tailored permit lists
- Project timelines
- Express permitting review
- Scoping; pre-applications meeting
- Permit application tracking
- On-site consultation; troubleshooting

EXPRESS
Permit Review





One – Stop Permit Checklist

Does your project involve:

<i>Permitting requirements vary according to the project type and individual site location. Analyze your project by asking these questions below.</i>	Municipal & County Government	Federal Agencies	Other State Agencies	Water Resources	Air Quality	Coastal Management	Energy Mineral & Land Resources	Waste Management
Involve a bridge or a culvert(s)?	●	●	●	●		●	●	
Involve the addition of any materials or fill to surface waters or to a wetland?		●		●		●	●	
Involve any work in the water, over the water or wetland(s), or on high ground near the water (e.g., buffer zones, riparian areas, etc.?)	●	●		●		●	●	
Involve land disturbance or construction proposed on a barrier island or mainland shoreline?	●	●				●	●	
Result in stormwater discharge to surface waters or wetland(s)?	●	●		●		●	●	
Involve site grading, filling, excavating or any land clearing?	●	●	●	●		●	●	
Involve a wastewater discharge into surface waters or wetland(s)?		●		●		●		
Involve a new wastewater discharge or the installation of any type of sewer collection system?	●	●	●	●		●	●	
Involve the disposal of wastewater in a manner other than discharging to surface waters?	●		●	●			●	
Divert or obstruct the natural flow; or change the natural bedding or bank of the creek or any surface water?	●	●		●		●	●	
Involve the demolition of an existing structure?	●		●		●	●	●	●
Involve the installation or abandonment of any type of well?	●		●	●				
Involve constructing or expanding a public or shared waterline?	●			●			●	
Involve providing drinking water for greater than 15 connections or greater than 25 people?	●		●	●			●	
Involve development located within a coastal county?	●	●	●	●		●	●	
Require using or removing materials from the ground or a streambed?	●	●	●	●		●	●	
Involve the management, treatment, storage and/or disposal of hazardous/solid waste?	●			●	●	●	●	●
Involved in an activity that results in the abatement or emission of an air pollutant?	●				●			
Involve the installation of an air pollution control device?	●				●			
Involve installing, owning, removing or operating an underground or aboveground storage tank?	●	●	●					●



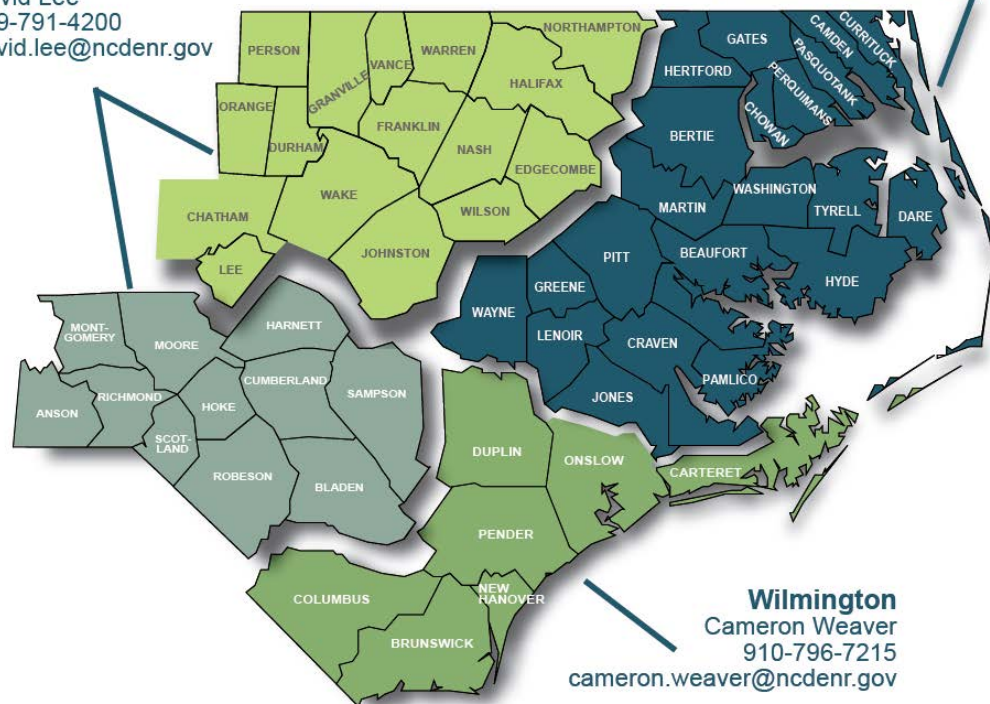
Permit Assistance: DEQ Regional Offices

Asheville
Alison Davidson
828-296-4500
alison.davidson@ncdenr.gov



Mooresville & Winston-Salem
Marcia Allocco
704-663-1699
marcia.allocco@ncdenr.gov

Raleigh & Fayetteville
David Lee
919-791-4200
david.lee@ncdenr.gov



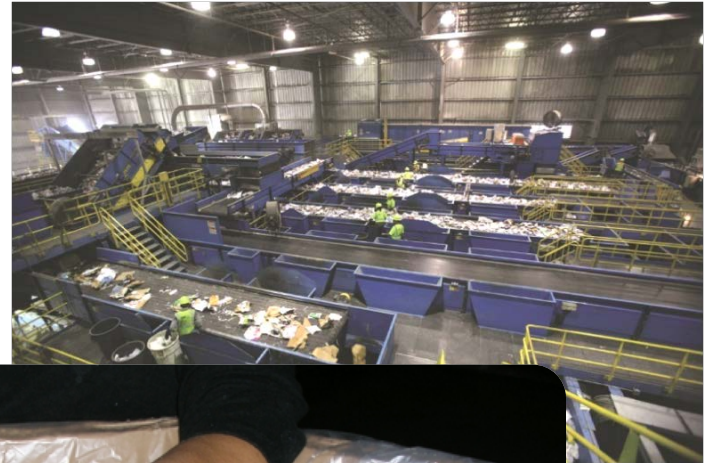
Washington
Lyn Hardison
252-946-6481
lyn.hardison@ncdenr.gov

Wilmington
Cameron Weaver
910-796-7215
cameron.weaver@ncdenr.gov



Technical Assistance: Recycling

- Waste reduction
- Market identification
- Grants: recycling businesses and local gov't
- On-line tools
- Composting; organics management
- Outreach





Recycling: On-line Tools

NORTH CAROLINA WasteTrader

[Materials Available](#)[Materials Wanted](#)[Need Help?](#)[✉ Tell a Friend](#)

Welcome to **NC WasteTrader**, North Carolina's marketplace for discarded or surplus materials and products. This waste exchange service is designed to divert recoverable materials from disposal while providing feedstocks and supplies to potential users.

[View Materials Available](#)[View Materials Wanted](#)[List Materials On WasteTrader \(login\)](#)

NCGov.com * DENR Customer Service * Disclaimer

[Recycling Markets Directory](#)[Local Government Waste Reduction Programs/Contacts](#)[Links to Other Exchanges](#)[NC BiomassTrader](#)[Join the P2Assist Listserv](#)[State Energy Office](#)[FreeCycle Website](#)

North Carolina Department
of Environment and
Natural Resources

North Carolina Division of Pollution Prevention and Environmental Assistance (DPPEA)
1639 Mail Service Center • Raleigh NC 27699-1639 • (919) 715-6500 • (800) 763-0136

NORTH CAROLINA Recycling Markets Directory

[RBAC Home](#)[Search Directory](#)[Get Listed](#)[N.C. WasteTrader](#)[Links](#)

Search Directory: Use this as a tool to find an outlet for your recyclable materials. If you're not sure under which category to find your material, see our complete [LIST](#) of materials.

By material. Select the *general* type of material you want to recycle from the drop-down list below, then click "Go." You have selected ABC Container Recycling as the general material type. Choose the *specific* type of material you want to recycle from the drop-down list below, then click "Go."

STEP 1 | ABC Container Recycling

Go

STEP 2 | ABC Containers - All

Go

By name. If you know the name of the recycling company you seek, please select the first letter of the company's name:

[A](#) [B](#) [C](#) [D](#) [E](#) [F](#) [G](#) [H](#) [I](#) [J](#) [K](#) [L](#) [M](#) [N](#) [O](#) [P](#) [Q](#) [R](#) [S](#) [T](#) [U](#) [V](#) [W](#) [X](#) [Y](#) [Z](#)

Get Listed: If your company is not currently listed, you can do so [electronically](#) or by contacting RBAC staff at the numbers below.

You might also want to consider listing materials available/wanted on [NC WasteTrader](#), North Carolina's marketplace for discarded or surplus materials or products.

Check out our interactive [North Carolina Material Recovery Facilities map](#).

Need Help? [Please visit our help page](#) or contact the RBAC Market Development Team at (919) 707-8100 or (877) 623-6748.



Zero Waste to Landfill

- Cost savings
- Cleaner production
- Sustainability
- Marketability



ESI Members-ZWTL



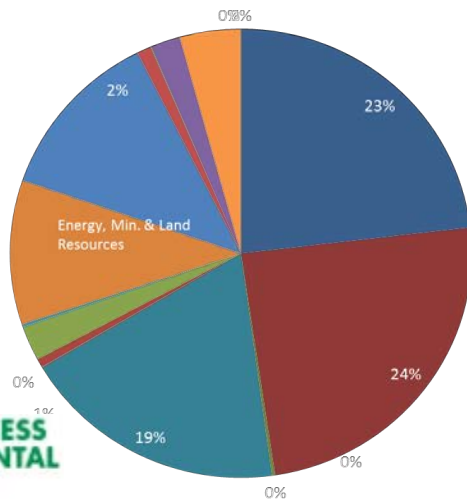


Technical and Compliance Assistance



Waste Reduction Partners

DEQ Toll-Free Line Calls by Division



- Division**
- Waste Management
 - Water Resources
 - Water Infrastructure
 - Parks & Recreation
 - Non-DEQ
 - National Heritage Trust Fund
 - Museum of Natural Sciences
 - Mitigation Services
 - Marine Fisheries
 - Land & Water Stewardship
 - Environmental Education
 - Environmental assistance & customer service
 - Energy, Mineral, Land Resources
 - DEQ Secretary's office
 - Conservation, Planning & Community Affairs
 - Coastal Management
 - Air Quality

Less than 1%



www.ncesi.org





Waste Reduction Partners

- Cost savings-consulting services
 - Energy & water efficiencies assessments
 - Solid waste reduction measures
 - Lean and Green reviews
- Confidential: no cost
- Staffed by retired engineers & scientists
- Report with recommendations and cost savings



Waste Reduction Partners





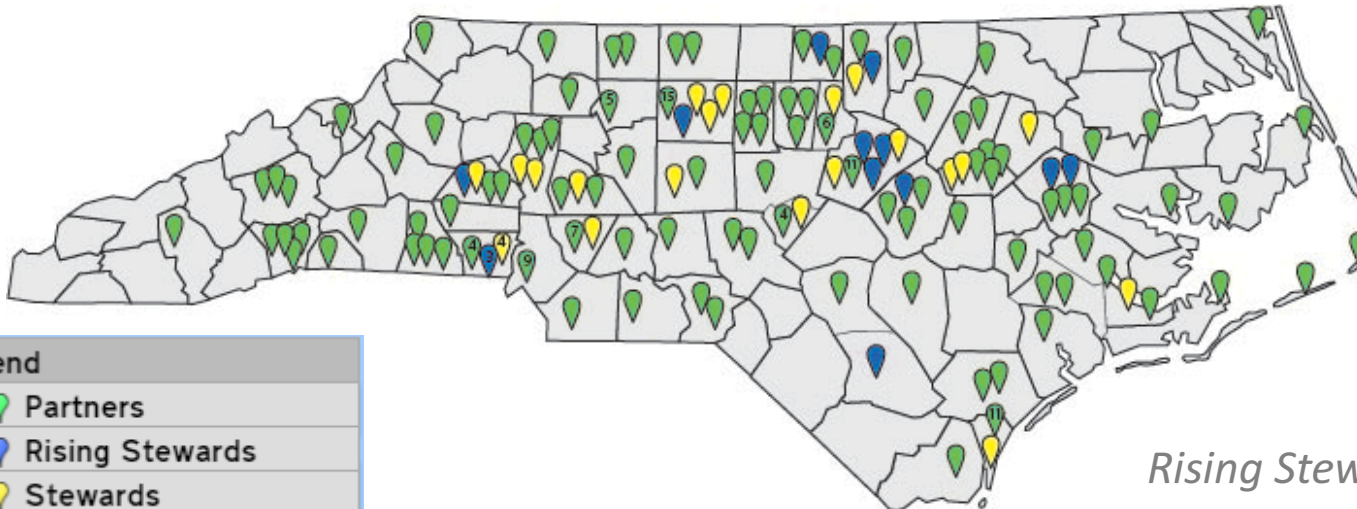
Environmental Stewardship Initiative

2002

- 1 Steward
- 27 Partners

2016

- 23 Steward
- 14 Rising Steward
- 117 Partners; 165 sites



Rising Steward level added in 2004



Stewards

ASMO North Carolina Inc. – Statesville
Bridgestone Americas Tire Operations LLC – Wilson
City of Gastonia Crowders Creek Resource Recovery Facility
City of Gastonia Long Creek Resource Recovery Facility
City of Gastonia Water Treatment Plant
Corning Inc. – Wilmington
Daimler Trucks North America LLC – Cleveland
Dell – Apex
Engineered Sintered Components – Troutman
Firestone Fibers & Textiles – Kings Mountain
Fleet Readiness Center East – Cherry Point
GKN Driveline- Sanford Precision Forming Facility – Sanford
Hickory Cable Facility, Corning Cable Systems
John Deere Turf Care – Fuquay-Varina
Keihin Carolina System Technology, LLC – Tarboro
N.C. Zoological Park – Asheboro
Santa Fe Natural Tobacco Knotts Grove Campus – Oxford
Smithfield Packing Company – Wilson
Stanley, Black & Decker – Kannapolis
TE Connectivity - Pegg Rd – Greensboro
TE Connectivity – Burgess Rd – Greensboro
Thomas Built Buses, Inc. – High Point
U.S. Environmental Protection Agency – RTP



Rising Stewards

Ajinomoto North America, Inc. – Raleigh
ASMO North America Inc. – Greenville
Bridgestone-Bandag, LLC – Oxford
City of Gastonia Resource Recovery Farm
Daimler Trucks North America LLC – Gastonia
Eaton Corporation, Raleigh Production Operations
Eaton Corporation, Youngsville Plant Operations
Firestone Fibers & Textiles Company, Gastonia
GKN Driveline – Roxboro
GKN Sinter Metals – Conover
Grifols Therapeutics – Clayton
Hyster-Yale Group – Greenville
Smithfield Farmland – Tar Heel Facility
Qorvo, Inc – Greensboro



Partners

Alliance One International Inc. (5)*
American Emergency Vehicles
American Snuff Company / Taylor Brothers
AW North Carolina Inc. – Durham
Baker Furniture –Hildebran
Baker Furniture – High Point
Borg Warner Thermal Systems – Fletcher
BorgWarner Turbo Systems – Arden
Burt's Bees Inc. – Morrisville
Cape Fear Public Utility Authority (9)*
Cascades Tissue Group – North Carolina Inc. – Rockingham
Caterpillar BCP – Sanford
Caterpillar – Clayton
Charlotte-Mecklenburg School System
City of Gastonia Public Works Division
City of Hendersonville Water Treatment Plant
City of Shelby First Broad River Wastewater Treatment Plant
City of Shelby Water Plant
CMI Plastics
CommScope – Greensboro
Crown Equipment – Kinston
Daimler Trucks North America LLC – Mt Holly
Domtar Paper Company, LLC – Plymouth
Eaton Corporation CPO – Raleigh
Eno River State Park
Falls Lake State Recreation Area
Freudenburg Nonwovens – Durham
General Electric Company – Aviation – RTP
General Electric Company – Industrial Solutions – Mebane

Haeco Airframe Services – Greensboro
Hanging Rock State Park
Herbalife Innovation and Manufacturing – Winston Salem
High Point Furniture (2)*
International Paper – Riegelwood Mill
Iredell Fiber, Div. of Leggett & Platt – Statesville
Kao Specialties Americas, LLC – High Point
Leggett & Platt ON64 – High Point
Liberty Tire Recycling, LLC (2)*
Linamar Corporation
Martin Marietta (58)*
Mayo River State Park
Mecklenburg County Solid Waste Operations (4)*
Medoc Mountain State Park
Michelin Aircraft Tire Co. – Norwood
Momentive Specialty Chemicals – Morganton
MVP Group International – Elkin
NIEHS – RTP
N.C. DOT Ferry Division (9)*
North State Communications – High Point
Pfizer – Sanford
Pilot Mountain State Park
PRC Industries – Spruce Pine
PSNC Energy Carolinas Inc. (21)*
SELEE Corporation – Hendersonville
Siemens Medical Solutions, CSG Service Headquarters – Cary
Smithfield Clinton Plant
Center at Haw River State Park
Universal Leaf North America US Inc. (2)*
Uchiyama Manufacturing America LLC
Water and Sewer Authority of Cabarrus County (3)*



ESI Benefits and Services

- Technical Assistance
- Networking
- Recognition
- Electronic Newsletter
- DEACS Coach
- Trainings
- EMS Assistance
- Steward Forum





Upcoming Trainings

- ISO 14001:2015 Training – 7 one-day classes
- ISO 14001:2015 Conversion class
- Personalized onsite EMS assistance
- Internal Auditing
- EMS Gap Analysis
- Networking/Training:
 - At ESI facilities
 - Facility tours
 - Networking with ESI members & DEQ
 - Topic based/facility lead
 - Energy
 - Solid waste reduction
 - EMS

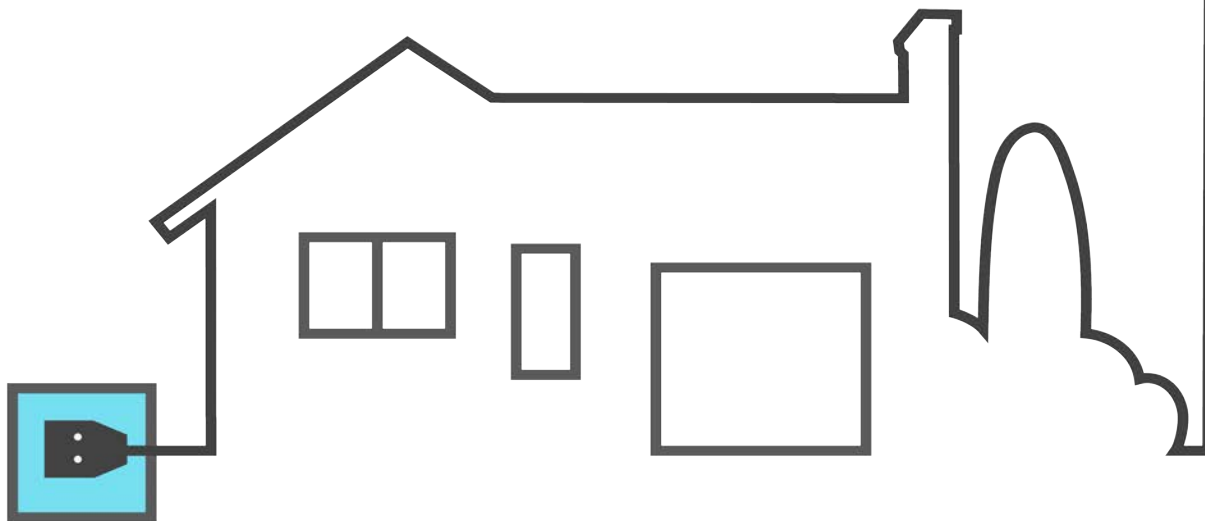




ESI members saved
enough energy in one
year to power almost

293,000

average North Carolina
homes for a year.





ESI members saved
enough money on
environmental
projects in one year to
pay the salary of almost

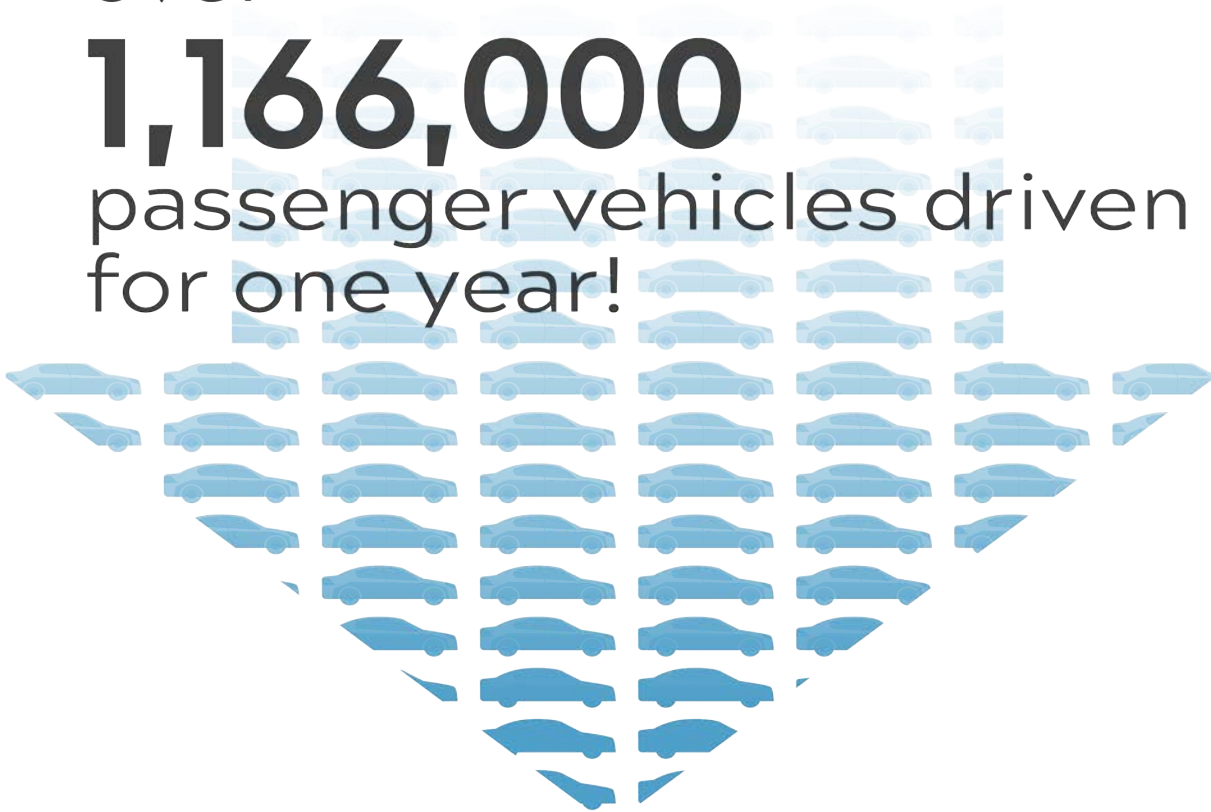
**88 PEOPLE EARNING
\$30,000
PER YEAR.**



In one year ESI members
reduced greenhouse gas
emissions equivalent to
over

1,166,000

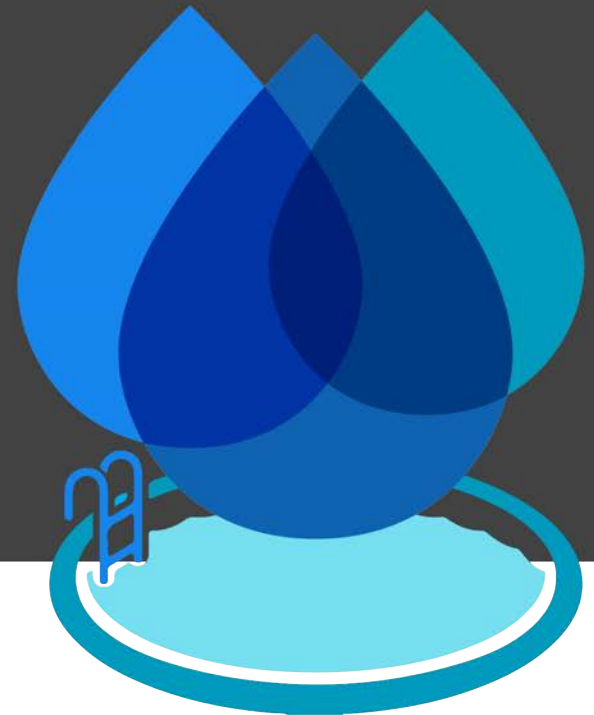
passenger vehicles driven
for one year!





ESI members saved
enough water in one year to
fill more than

110,000
average-sized
swimming pools



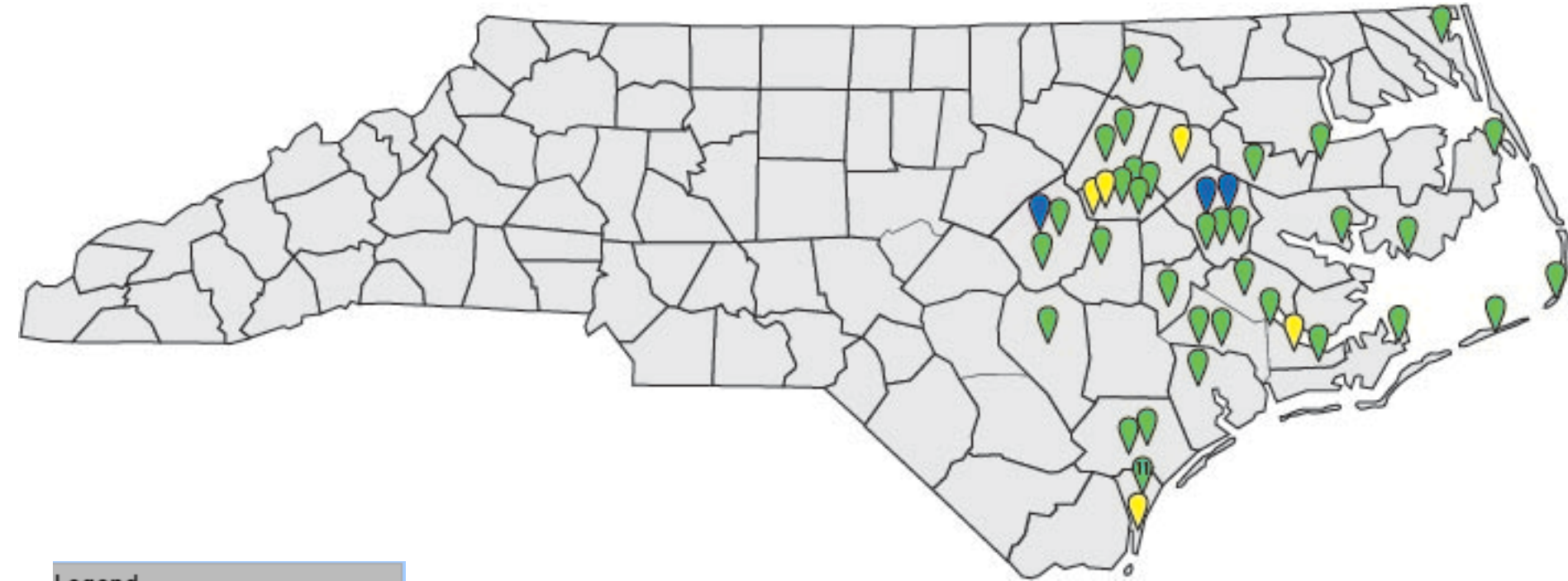


ESI MEMBERS SELF REPORTED REDUCTIONS

	2015 SAVINGS	2004-2015 SAVINGS
Water Use Reductions	2,439,754,313 Gallons	8,665,581,485 Gallons
Increase in Recycling	42,150 Tons	314,716 Tons
Waste-to-Landfill Reductions	42,737 Tons	425,788 Tons
Air Emissions Reductions	76 Tons	1,489 Tons
Energy	22,289,629 mmBtu	73,242,506 mmBtu
TOTAL COST SAVINGS	\$2,626,307	\$61,148,337



ESI Eastern Membership



Legend	
<input checked="" type="checkbox"/>	Partners
<input checked="" type="checkbox"/>	Rising Stewards
<input checked="" type="checkbox"/>	Stewards

- 5 Stewards
- 3 Rising Stewards
- 44 Partners



Eastern ESI Stewards





Eastern ESI Rising Stewards

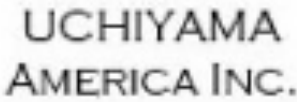


GRIFOLS





Eastern ESI Partners





To Join ESI

- Commitment to compliance
- Not under environmental criminal indictment or conviction
- Report annually on progress towards environmental performance goals and any reportable non-compliance





www.ncesi.org



Contact Information

Jamie Ragan

Environmental Assistance Section Chief

DEQ, Division of Environmental Assistance and
Customer Service

919-707-8141

Jamie.ragan@nc.denr.gov