

Project George – Why Beaufort County NC?

- Two potential facilities:
 - Industry Ready Building 24,300 sq. ft. expandable to 48,600 sq. ft.
 - AAF Flanders Building 50,000 sq. ft.
- Beaufort County NC Metal Working Companies (10 companies with 2,033 employees*) supported by 5 machine shops employing 186 people plus numerous equipment, supply and service companies
- Parker Hannifin plant closure 223 employees (*) laid off by 12/18
- 2,070 assemblers, fabricators and welders in Beaufort, Craven & Pitt Counties
- Beaufort County Schools had 25 completers in the 2017-2018 school year with Welding II or above and safety credentials.
- Beaufort County Community College produced 40 certified welders in the 2017-2018 school year.
- In August 2018 NCWorks had registered 25 welders looking for work in Beaufort County NC
- Beaufort County Community College Welding & Fabrication Technology A50420 curriculum
- Beaufort County Schools and Community College Internships, Pre-Apprenticeships and Apprenticeship Programs
- Beaufort County Community College Customized Training Programs including welding and metal fabrication
- Within 45-minute drive time:
 - Population 286,683
 - Low cost of living & taxes
 - Average housing value \$171,595
 - East Carolina University
 - Major Medical Center – Vidant
 - Excellent recreational opportunities
 - Urban, suburban & exurban lifestyles
 - Beaufort & Pitt Community Colleges
 - PGV Regional Airport

Beaufort County NC Metal Working Companies (10 companies with 2,033 employees)

AAF Flanders Corporation
Phil Whitaker, President
5310 Flanders Filters Road
Washington, NC 27889
Primary Product: Air Filtration Filters
NAICS: 33341
Employees: 433
Telephone: (252) 946-8081
Website: <https://www.aafintl.com/en/commercial/about-us>

Camfil USA
Ryan Woolard, General Manager
200 Creekside Drive
Washington, NC 27889
Primary Product: HEPA Filters and Metal Fabrication
NAICS: 3341
Employees: 163
Telephone: (252) 975-1141
Website: <https://www.camfil.us/>

Carver Machine Works
Lindsey Crisp, President & CEO
129 Christian Camp Service Road
Washington, NC 27889
Primary Product: Fabrication & Machining
NAICS: 3341
Employees: 54
Telephone: (252) 975-3101
Website: <http://cmwglobal.com/>

Parker Hannifin
Jay Narasimhan, Plant Manager
230 Clarks Neck Road
Washington, NC 27889
Primary Product: Diesel Filter Components
NAICS: 33631
Employees: 223
Telephone: (252) 975-2553
Website: <http://www.parker.com/>

Hackney
Joey Peacos, General Manager
400 Hackney Avenue
Washington, NC 27889
Primary Product: Truck Bodies
NAICS: 33621
Employees: 175
Telephone: (252) 946-6521
Website: <http://www.vthackney.com/company/about/>

Linton Industries Inc.
D. C. Linton, Owner
2401 West 5th Street
Washington, NC 27889
Primary Product: Metal Fabrication
NAICS: 33249
Employees: 10
Telephone: (252) 833-4045
Website: <https://www.lintonindustriesinc.net/>

Oak Ridge Industries
Kevin Boyd, President
1228 Page Road
Washington, NC 27889
Primary Product: Metal Working
NAICS: 33249
Employees: 60
Telephone: (252) 833-4061
Website: <http://oakridgemw.com/>

P & G Manufacturing Inc.
Charlie Rasmussen, President
339 Old Bath Hwy
Washington, NC 27889
Primary Product: Machining & Welding
NAICS: 3231
Employees: 51
Telephone: (252) 946-9110
Website: <http://www.pgmfg.com/>

Nutrien
Steve Beckel, General Manager
1530 Hwy 305 South
Washington, NC 27889
Primary Product: Phosphate
NAICS: 212392 / 325312
Employees: 853
Telephone: (252) 943-6363
Website: <http://www.nutrien.com/>

Pungo Machine, Inc.
Wheeler Johnson, Owner
26507 US Hwy 264
Pantego, NC 27860
Primary Product: Machine Working
NAICS: 33712
Employees: 11
Telephone: (252) 322-4111
Website: <http://pungomachine.com/>

Parker Hannifin Plant Closure 12/18 Job Count

Position	#
Accountant C	1
Admin - PC Network	1
Assembler	10
Assembler II	93
Assembler III	23
Assembler/Setter V	13
Buyer	2
CNC Master Programmer	1
CNC Operator IV	2
CNC Setter VI	2
CNC Setter VIII	1
Controller	1
Custodian	2
Engineering Assistant	1
Engr - Industrial	1
Engr - Manufacturing	1
Engr - Project	1
Engr - Quality	1
Engr - Sr Quality Assurance	1
Engineer-Sr. Supply Quality	1
Facility Maintenance IX	1
Facility Maintenance VIII	1
HR Administrator	1
HR Generalist	1
Inspector IV	2
Inspector V	1
Inventory Ctrl Supervisor	1
Lead person-Machine	1
Machine Operator III	3
Maintenance Mechanic X	2
Master Scheduler	4
Material Handler III	3
Materials Planner	1
Mgr - Material	1
Mgr - Plant	1
Mgr - Purchasing	1
Mgr - Quality	1
MRO Crib Specialist	2
Planner Assistant	1
Prod Machine Oper IV	3
Prod Machine Setter VI	3
Prod Machine Setter VII	7
Prod Machine Setter VIII	2
Quality Support Spec VII	1
Sr Financial Analyst	1
Stockroom Attendent IV	9
Stockroom Attendent V	2
Supv - General	2
Supv - Production	3
Tool & Die Maker IX	1
Transportation Specialist	1
Grand Total	223

Beaufort County NC Machine Shops

#	Company	Website	Presidents	Phone	Email	Address	Employees
1	Carver Machine Works	http://cmwglobal.com/	Lindsey Crisp	(252) 975-3101	lcristp@cmwglobal.com	129 Christian Service Camp Rd, Washington, NC 27889	54
2	Linton Industries	https://www.lintonindustriesinc.net/	D.C. Linton	(252) 940-1917	lintonwelding@yahoo.com	3829 US Highway 264 Washington, NC 27889	10
3	Oak Ridge Industries	http://oakridgemw.com/	Kevin Boyd	(252) 833-4061	kboyd@oakridgemw.com	1228 Page Rd, Washington, NC 27889	60
4	P&G Manufacturing	http://www.pgmfg.com/	Charlie Rasmussen	(252) 946-9110	Charlie@pgmfg.com	339 Old Bath Hwy, Washington, NC 27889	51
5	Pungo Machine Shop	http://pungomachine.com/	Wheeler Johnson	(252) 943-6363	wheeler@pungomachine.com	26507 Us Highway 264 E, Pantego, NC 27860	11

2018 Occupational Employment and Wages in North Carolina - Beaufort, Craven & Pitt Counties

Area Name	Occupational Code	Occupation	Industry	Estimated Employment	Estimated Hourly Wage; Entry	Estimated Hourly Wage; Mean	Estimated Hourly Wage; Median	Estimated Hourly Wage; Experience
Beaufort County	51-0000	Production Occupations	Total, All Industries	1,870	\$8.86	\$16.72	\$14.06	\$20.65
Craven County	51-0000	Production Occupations	Total, All Industries	3,130	\$11.19	\$18.66	\$16.57	\$22.39
Pitt County	51-0000	Production Occupations	Total, All Industries	3,820	\$10.90	\$18.56	\$17.78	\$22.39
			Total	8,820				
Beaufort County	51-1011	First-Line Supervisors of Production and Operating Workers	Total, All Industries	120	\$16.90	\$30.20	\$26.79	\$36.85
Craven County	51-1011	First-Line Supervisors of Production and Operating Workers	Total, All Industries	160	\$21.22	\$32.95	\$35.00	\$38.82
Pitt County	51-1011	First-Line Supervisors of Production and Operating Workers	Total, All Industries	320	\$22.47	\$31.35	\$30.82	\$35.80
			Total	600				
Beaufort County	51-2098	Assemblers and Fabricators, All Other, Including Team Assemblers	Total, All Industries	470	\$8.70	\$12.24	\$11.16	\$14.02
Craven County	51-2098	Assemblers and Fabricators, All Other, Including Team Assemblers	Total, All Industries	720	\$9.33	\$13.85	\$13.49	\$16.11
Pitt County	51-2098	Assemblers and Fabricators, All Other, Including Team Assemblers	Total, All Industries	520	\$12.91	\$16.85	\$17.43	\$18.82
			Total	1,710				
Beaufort County	51-4121	Welders, Cutters, Solderers, and Brazers	Total, All Industries	120	\$19.04	\$22.83	\$23.07	\$24.73
Craven County	51-4121	Welders, Cutters, Solderers, and Brazers	Total, All Industries	70	\$18.27	\$26.13	\$27.08	\$30.05
Pitt County	51-4121	Welders, Cutters, Solderers, and Brazers	Total, All Industries	170	\$19.61	\$22.83	\$22.36	\$24.44
			Total	360				
Beaufort County	51-9061	Inspectors, Testers, Sorters, Samplers, and Weighers	Total, All Industries	60	\$9.39	\$14.73	\$14.27	\$17.40
Craven County	51-9061	Inspectors, Testers, Sorters, Samplers, and Weighers	Total, All Industries	230	\$11.96	\$20.49	\$20.73	\$24.75
Pitt County	51-9061	Inspectors, Testers, Sorters, Samplers, and Weighers	Total, All Industries	230	\$14.23	\$22.84	\$22.44	\$27.15
			Total	520				
Beaufort County	51-9198	Helpers--Production Workers	Total, All Industries	10	\$10.23	\$12.82	\$12.32	\$14.11
Craven County	51-9198	Helpers--Production Workers	Total, All Industries	10	\$9.95	\$12.34	\$12.91	\$13.54
Pitt County	51-9198	Helpers--Production Workers	Total, All Industries	110	\$8.43	\$11.35	\$10.34	\$12.82
			Total	130				

Welding Technology A50420

The Welding Technology curriculum provides students with a sound understanding of the science, technology, and applications essential for successful employment in the welding and metalworking industry.

Instruction includes consumable and non-consumable electrode welding and cutting processes. Courses may include math, print reading, metallurgy, welding inspection, and destructive and non-destructive testing providing the student with industry-standard skills developed through classroom training and practical application.

Graduates of the Welding Technology curriculum may be employed as entry-level technicians in welding and metalworking industries. Career opportunities also exist in construction, manufacturing, fabrication, sales, quality control, supervision, and welding-related self-employment.

Number of credit hours required for this program: 66

General Education Requirements

Required English

Take 3 credits from ENG-112 ENG-113 ENG-114.

Humanities/Fine Arts

Take 3 credits from ART-111 ART-114 ART-115 DRA-111 ENG-131 ENG-231 ENG-232 ENG-241 ENG-242 HUM-115 HUM-120 HUM-121 HUM-122 HUM-150 HUM-160 MUS-110 MUS-112 MUS-210 PHI-215 PHI-240 REL-110 REL-211 REL-212.

English

Take 3 credits from ENG-111.

Mathematics

Take 3 credits from MAT-110 MAT-121 MAT-171.

Psychology

Take 3 credits from PSY-118 PSY-150.

Major Requirements

Required Courses

Take 18 credits from WLD-110 WLD-115 WLD-121 WLD-131 WLD-141.

Other Major Requirements

Other Required Courses

Take 21 credits from MEC-111 WLD-116 WLD-151 WLD-251 WLD-262 WLD-265.

Drafting Option

Take 3 credits from DFT-151 MEC-231.

Computers

Take 1 credits from CIS-110 CIS-111 CIS-113.

Welding/Industrial Safety

Take 7 credits from ISC-112 WBL-112 WBL-113 WBL-122 WBL-123 WLD-132 WLD-212.

Other Requirements

Student Success

Take 1 credits from **ACA-111** **ACA-115** **ACA-118** **ACA-122**.

Welding Technology A50420

. Cutting Processes

WLD-110

This course introduces oxy-fuel and plasma-arc cutting systems. Topics include safety, proper equipment setup, and operation of oxy-fuel and plasma-arc cutting equipment with emphasis on straight line, curve and bevel cutting. Upon completion, students should be able to oxy-fuel and plasma-arc cut metals of varying thickness.

Class	Lab	Clinic	Credit
1	3	0	2

. Basic Welding Processes

WLD-112

This course introduces basic welding and cutting. Emphasis is placed on beads applied with gases, mild steel fillers, and electrodes and the capillary action of solder. Upon completion, students should be able to set up welding and oxy-fuel equipment and perform welding, brazing, and soldering processes.

Class	Lab	Clinic	Credit
1	3	0	2

. SMAW (Stick) Plate

WLD-115

This course introduces the shielded metal arc (stick) welding process. Emphasis is placed on padding, fillet, and groove welds in various positions with SMAW electrodes. Upon completion, students should be able to perform SMAW fillet and groove welds on carbon plate with prescribed electrodes.

Class	Lab	Clinic	Credit
2	9	0	5

. SMAW (stick) Plate/Pipe

WLD-116

Prerequisites: Take WLD-115

This course is designed to enhance skills with the shielded metal arc (stick) welding process. Emphasis is placed on advancing manipulative skills with SMAW electrodes on varying joint geometry. Upon completion, students should be able to perform groove welds on carbon steel with prescribed electrodes in the flat, horizontal, vertical, and overhead positions.

Class	Lab	Clinic	Credit
1	9	0	4

. GMAW (MIG) FCAW/Plate WLD-121

This course introduces metal arc welding and flux core arc welding processes. Topics include equipment setup and fillet and groove welds with emphasis on application of GMAW and FCAW electrodes on carbon steel plate. Upon completion, students should be able to perform fillet welds on carbon steel with prescribed electrodes in the flat, horizontal, and overhead positions.

Class	Lab	Clinic	Credit
2	6	0	4

. GTAW (TIG) Plate WLD-131

This course introduces the gas tungsten arc (TIG) welding process. Topics include correct selection of tungsten, polarity, gas, and proper filler rod with emphasis placed on safety, equipment setup, and welding techniques. Upon completion, students should be able to perform GTAW fillet and groove welds with various electrodes and filler materials.

Class	Lab	Clinic	Credit
2	6	0	4

. GTAW (TIG) Plate/Pipe WLD-132

Prerequisites: Take WLD-131

This course is designed to enhance skills with the gas tungsten arc (TIG) welding process. Topics include setup, joint preparation, and electrode selection with emphasis on manipulative skills in all welding positions on plate and pipe. Upon completion, students should be able to perform GTAW welds with prescribed electrodes and filler materials on various joint geometry.

Class	Lab	Clinic	Credit
1	6	0	3

. Symbols & Specifications WLD-141

This course introduces the basic symbols and specifications used in welding. Emphasis is placed on interpretation of lines, notes, welding symbols, and specifications. Upon completion, students should be able to read and interpret symbols and specifications commonly used in welding.

Class	Lab	Clinic	Credit
2	2	0	3

. Fabrication I

WLD-151

This course introduces the basic principles of fabrication. Emphasis is placed on safety, measurement, layout techniques, cutting, joining techniques, and the use of fabrication tools and equipment. Upon completion, students should be able to perform layout activities and operate various fabrication and material handling equipment.

Class	Lab	Clinic	Credit
2	6	0	4

. Inert Gas Welding

WLD-212

This course introduces inert gas-shielded welding methods (MIG/TIG). Topics include correct selection of consumable and non-consumable electrodes, equipment setup, safety, and welding techniques. Upon completion, students should be able to perform inert gas welding in flat, horizontal, and overhead positions.

Class	Lab	Clinic	Credit
1	3	0	2

. Fabrication II

WLD-251

Prerequisites: Take WLD-151

This course covers advanced fabrication skills. Topics include advanced layout and assembly methods with emphasis on the safe and correct use of fabrication tools and equipment. Upon completion, students should be able to fabricate projects from working drawings.

Class	Lab	Clinic	Credit
1	6	0	3

. Inspection & Testing

WLD-262

This course introduces destructive and non-destructive testing methods. Emphasis is placed on safety, types and methods of testing, and the use of testing equipment and materials. Upon completion, students should be able to understand and/or perform a variety of destructive and non-destructive testing processes.

Class	Lab	Clinic	Credit
2	2	0	3

. Automated Welding/Cutting

WLD-265

Prerequisites: Take All: WLD-110 and WLD-121

This course introduces automated welding equipment and processes. Topics include setup, programming, and operation of automated welding and cutting equipment. Upon

completion, students should be able to set up, program, and operate automated welding and cutting equipment.

Class	Lab	Clinic	Credit
2	6	0	

The mission of the Customized Training Program (CTP) is to help businesses in Beaufort, Hyde, Tyrrell, and Washington Counties maintain their competitive edge through awareness, education, and training. If your company is interested in learning more about these training opportunities, or to schedule a class, please contact Sara Watson, Director of the Customized Training & Apprenticeships, at 252.940.6311.

- Specialized training offered at no cost to fit the needs of your industry with flexible scheduling.
- Customized courses can be held at BCCC or at the business/industry location.

SOME OF THE CUSTOMIZED TRAINING CLASSES OFFERED...

Reliability/Productivity classes include:

- Introduction to Lean Manufacturing
- Yellow and Green Belt Certification
- Poka Yoke-Mistake Proofing
- 5-S
- Lean Six Sigma
- Value Stream Mapping

Quality classes include:

- TS 16949
- NAQ-1/VQA-1
- Commercial Grade Dedication
- ISO 14001 Environmental Management
- Measurement System Analysis
- Kepner Tregoe: Analytical Problem Solving
- Blueprint Reading
- Internal Auditor Training
- Lead Auditor Training
- Process Mapping
- OJT Train-the-Trainer
- FMEA (Failure Mode & Effects Analysis)
- GD&T (Geometric Dimensioning & Tolerancing)
- Math for Measurement
- IPC 610

Leadership/Management classes include:

- Essentials of Leadership
- Managing Complaints
- Resolving Conflicts
- Effective Discipline
- Time Management
- Achieve Global Supervisory/Manager Training
- Essentials of Communication
- Providing Performance Feedback
- Delegating
- Change Management
- Providing Constructive Feedback

- DDI Supervisory/Manager Training
- Business Management
- Leading Across Generations
- DISC Training

Operator/Mechanic Skills Training

- Solidworks and AutoCad
- PLC
- GibbsCAM
- CNC Level I and II
- Welding
- Machining
- Fabrication
- Robotic Welding
- Injection Molding
- Inventor
- Basic Electrical
- Commercial Grade Dedication
- Mechatronics

Safety classes include:

- Site Workplace Assessment
- OSHA 10 & 30 (General Industry & Construction)
- Overhead Crane Training
- Hazwoper Training
- Bloodborne Pathogens
- CSIP (Continuous Safety Improvement)
- Ergonomics
- Confined Space Entry
- Hazardous Materials Training
- Fire Extinguisher Training
- Fall Protection
- Lockout/Tagout
- Supervisor's Role in Safety Compliance
- OSHA Records & Accident Investigation
- Duties & Responsibilities of Safety Committees
- Inspection Checklist

New This Fall!!

Apprenticeship Beaufort County

This combination of on-the-job training and classroom instruction prepares participants for careers with local industry partners. Upon successful completion of the apprenticeship program, the Apprentice qualifies for industry recognized "journeyman" credentials in a skilled trade and an academic credential from BCCC. Apprentices have opportunities to begin professional careers in a variety of advanced manufacturing fields including Injection Molding Technician, Production Process Technician, and Welding Technician.

Benefits of an Apprenticeship program include:

- Paid employment during training with progressive wage increases
- Obtainment of a BCCC academic credential that provides credit towards an AAS degree
- Industry recognized journeyman credentials at both the state and federal level

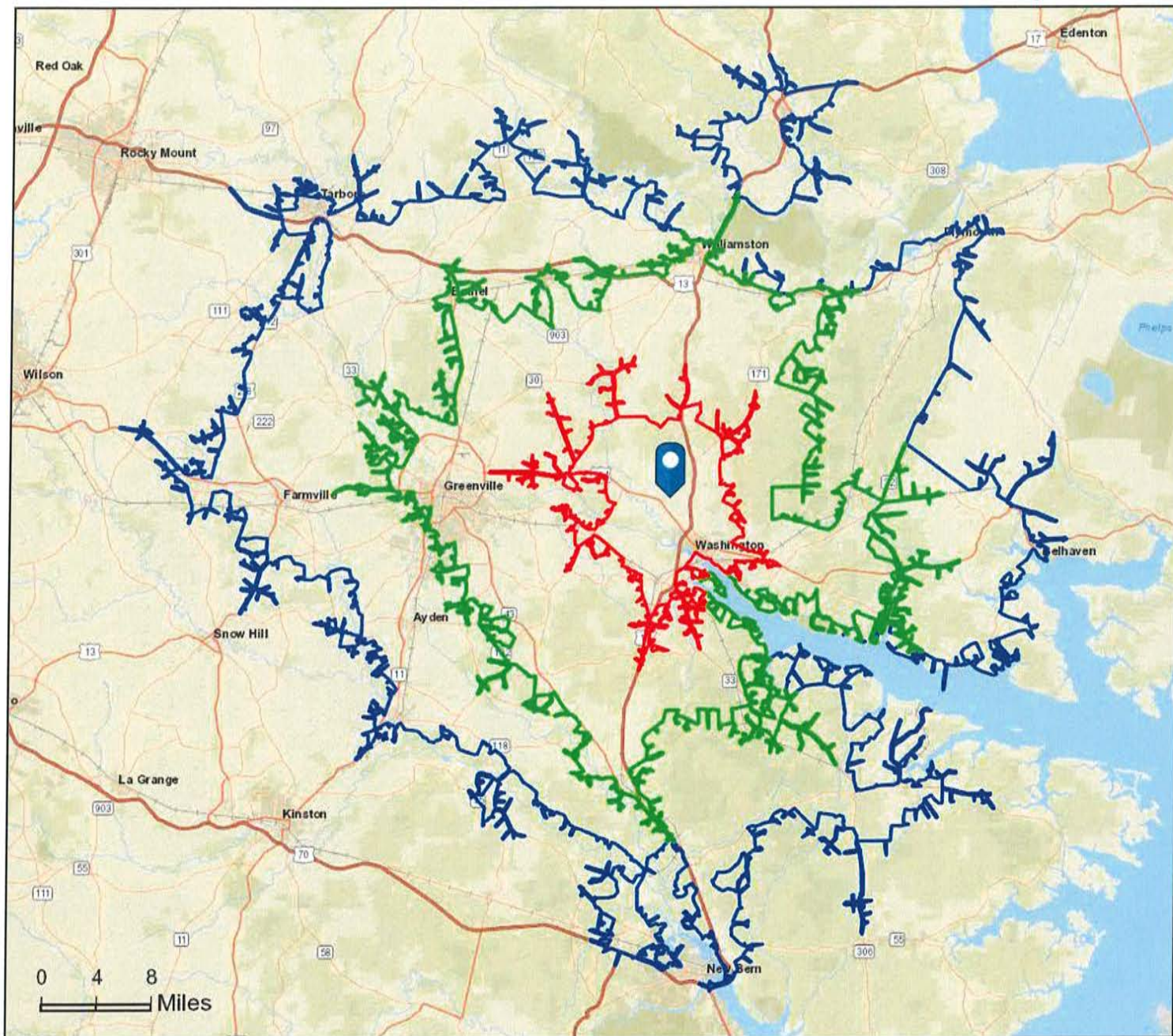
If you are a business interested in registering as a sponsoring apprenticeship organization, or if you are a current high school junior or senior, high school graduate, or working adult interested in connecting with apprenticeship opportunities, please call 252-940-6311.



Site Map

720 Page Rd, Washington, North Carolina, 27889
Drive Time: 15, 30, 45 minute radii

Prepared by Esri
Latitude: 35.59873
Longitude: -77.09334



August 02, 2018



Executive Summary

720 Page Rd, Washington, North Carolina, 27889
Drive Time: 15, 30, 45 minute radii

Prepared by Esri
Latitude: 35.59873
Longitude: -77.09334

	15 minutes	30 minutes	45 minutes
Population			
2000 Population	20,915	135,921	234,999
2010 Population	22,969	159,136	276,505
2018 Population	23,561	164,802	286,683
2023 Population	23,939	169,102	292,913
2000-2010 Annual Rate	0.94%	1.59%	1.64%
2010-2018 Annual Rate	0.31%	0.42%	0.44%
2018-2023 Annual Rate	0.32%	0.52%	0.43%
2018 Male Population	47.6%	47.9%	47.7%
2018 Female Population	52.4%	52.1%	52.3%
2018 Median Age	41.3	33.8	36.2

In the identified area, the current year population is 286,683. In 2010, the Census count in the area was 276,505. The rate of change since 2010 was 0.44% annually. The five-year projection for the population in the area is 292,913 representing a change of 0.43% annually from 2018 to 2023. Currently, the population is 47.7% male and 52.3% female.

Median Age

The median age in this area is 41.3, compared to U.S. median age of 38.3.

Race and Ethnicity

2018 White Alone	58.2%	59.7%	56.8%
2018 Black Alone	32.3%	31.7%	35.2%
2018 American Indian/Alaska Native Alone	0.4%	0.4%	0.4%
2018 Asian Alone	0.6%	1.9%	1.6%
2018 Pacific Islander Alone	0.1%	0.1%	0.1%
2018 Other Race	6.6%	4.2%	3.8%
2018 Two or More Races	1.9%	2.2%	2.2%
2018 Hispanic Origin (Any Race)	9.9%	6.9%	6.6%

Persons of Hispanic origin represent 6.6% of the population in the identified area compared to 18.3% of the U.S. population. Persons of Hispanic Origin may be of any race. The Diversity Index, which measures the probability that two people from the same area will be from different race/ethnic groups, is 60.9 in the identified area, compared to 64.3 for the U.S. as a whole.

Households

2000 Households	8,316	53,925	92,865
2010 Households	9,246	64,824	111,975
2018 Total Households	9,473	66,837	115,666
2023 Total Households	9,625	68,568	118,041
2000-2010 Annual Rate	1.07%	1.86%	1.89%
2010-2018 Annual Rate	0.29%	0.37%	0.39%
2018-2023 Annual Rate	0.32%	0.51%	0.41%
2018 Average Household Size	2.44	2.35	2.40

The household count in this area has changed from 111,975 in 2010 to 115,666 in the current year, a change of 0.39% annually. The five-year projection of households is 118,041, a change of 0.41% annually from the current year total. Average household size is currently 2.40, compared to 2.39 in the year 2010. The number of families in the current year is 70,438 in the specified area.

Data Note: Income is expressed in current dollars

Source: U.S. Census Bureau, Census 2010 Summary File 1. Esri forecasts for 2018 and 2023. Esri converted Census 2000 data into 2010 geography.

August 02, 2018



Executive Summary

720 Page Rd, Washington, North Carolina, 27889
Drive Time: 15, 30, 45 minute radii

Prepared by Esri
Latitude: 35.59873
Longitude: -77.09334

	15 minutes	30 minutes	45 minutes
Median Household Income			
2018 Median Household Income	\$39,172	\$41,339	\$42,085
2023 Median Household Income	\$41,790	\$47,108	\$48,454
2018-2023 Annual Rate	1.30%	2.65%	2.86%
Average Household Income			
2018 Average Household Income	\$52,637	\$60,838	\$59,843
2023 Average Household Income	\$57,620	\$68,833	\$67,992
2018-2023 Annual Rate	1.83%	2.50%	2.59%
Per Capita Income			
2018 Per Capita Income	\$21,741	\$25,285	\$24,610
2023 Per Capita Income	\$23,755	\$28,495	\$27,852
2018-2023 Annual Rate	1.79%	2.42%	2.51%

Households by Income

Current median household income is \$42,085 in the area, compared to \$58,100 for all U.S. households. Median household income is projected to be \$48,454 in five years, compared to \$65,727 for all U.S. households

Current average household income is \$59,843 in this area, compared to \$83,694 for all U.S. households. Average household income is projected to be \$67,992 in five years, compared to \$96,109 for all U.S. households

Current per capita income is \$24,610 in the area, compared to the U.S. per capita income of \$31,950. The per capita income is projected to be \$27,852 in five years, compared to \$36,530 for all U.S. households

Housing

2000 Total Housing Units	9,236	60,219	104,664
2000 Owner Occupied Housing Units	5,624	32,506	59,562
2000 Renter Occupied Housing Units	2,692	21,420	33,303
2000 Vacant Housing Units	920	6,293	11,799
2010 Total Housing Units	10,368	72,611	125,872
2010 Owner Occupied Housing Units	5,708	35,370	66,508
2010 Renter Occupied Housing Units	3,538	29,454	45,467
2010 Vacant Housing Units	1,122	7,787	13,897
2018 Total Housing Units	10,770	75,634	131,543
2018 Owner Occupied Housing Units	5,406	33,906	64,758
2018 Renter Occupied Housing Units	4,067	32,931	50,908
2018 Vacant Housing Units	1,297	8,797	15,877
2023 Total Housing Units	11,058	78,633	136,438
2023 Owner Occupied Housing Units	5,637	35,528	67,644
2023 Renter Occupied Housing Units	3,988	33,040	50,397
2023 Vacant Housing Units	1,433	10,065	18,397

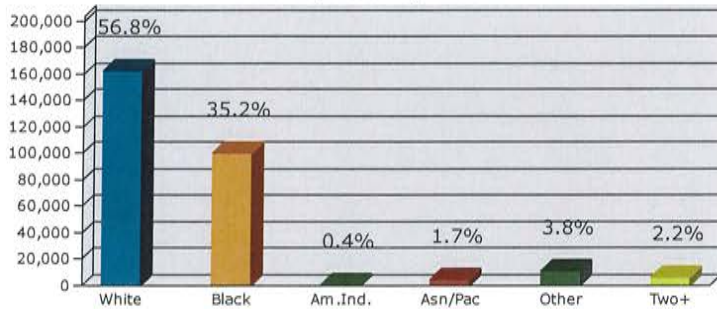
Currently, 49.2% of the 131,543 housing units in the area are owner occupied; 38.7%, renter occupied; and 12.1% are vacant. Currently, in the U.S., 56.0% of the housing units in the area are owner occupied; 32.8% are renter occupied; and 11.2% are vacant. In 2010, there were 125,872 housing units in the area - 52.8% owner occupied, 36.1% renter occupied, and 11.0% vacant. The annual rate of change in housing units since 2010 is 1.98%. Median home value in the area is \$133,753, compared to a median home value of \$218,492 for the U.S. In five years, median value is projected to change by 3.45% annually to \$158,442.

Data Note: Income is expressed in current dollars

Source: U.S. Census Bureau, Census 2010 Summary File 1. Esri forecasts for 2018 and 2023. Esri converted Census 2000 data into 2010 geography.

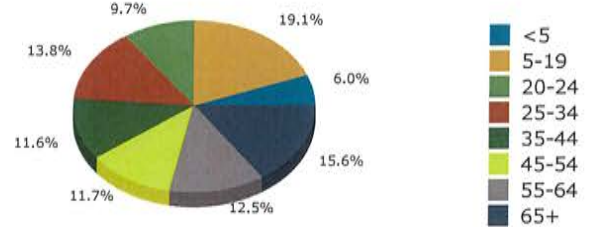
August 02, 2018

2018 Population by Race

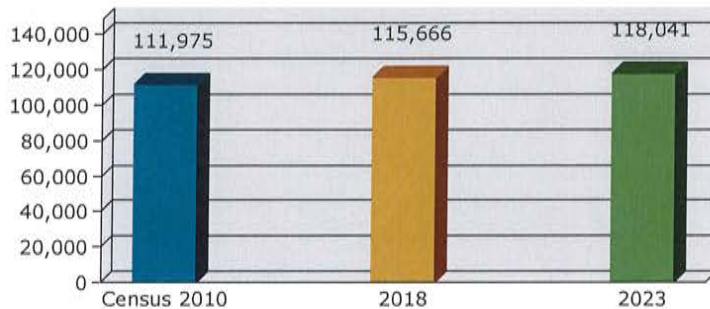


2018 Percent Hispanic Origin: 6.6%

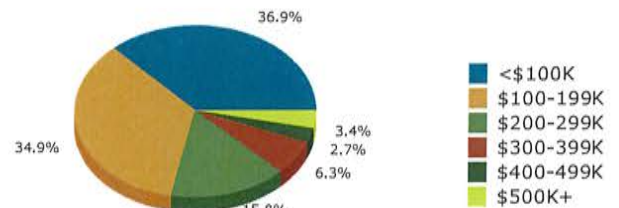
2018 Population by Age



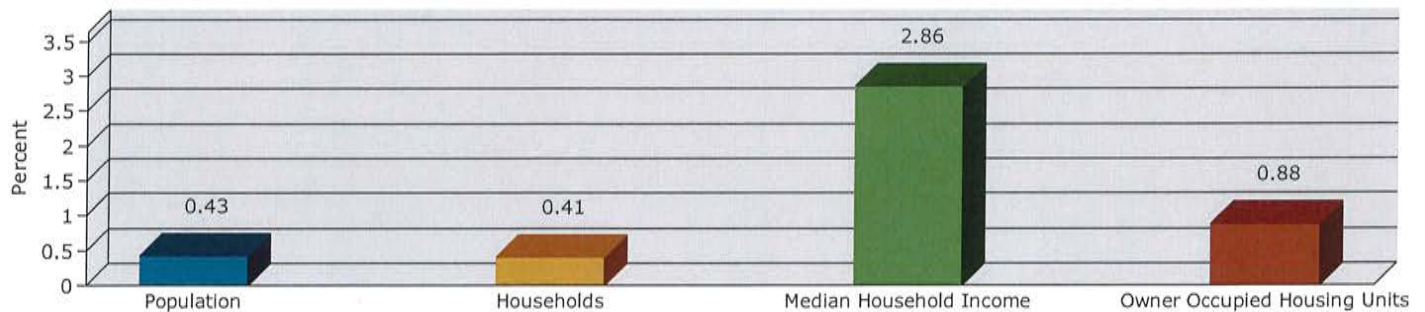
Households



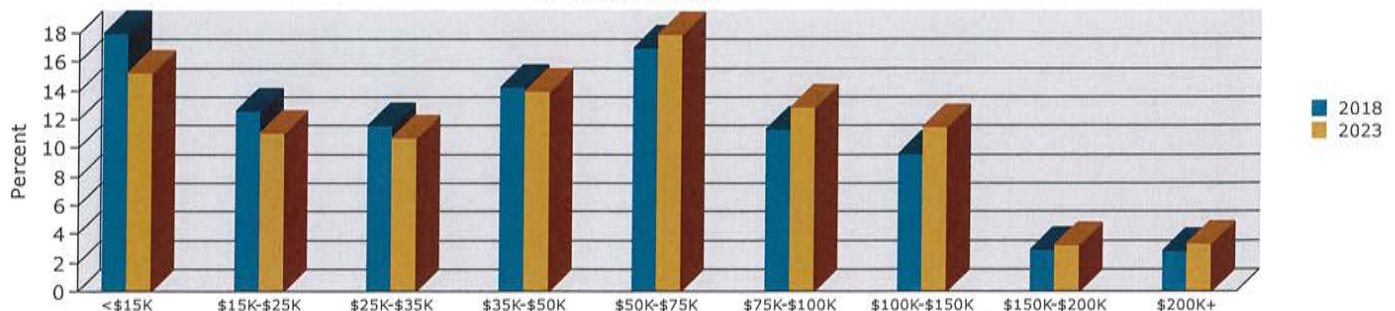
2018 Home Value



2018-2023 Annual Growth Rate



Household Income



Source: U.S. Census Bureau, Census 2010 Summary File 1. Esri forecasts for 2018 and 2023.

August 02, 2018



Housing Profile

720 Page Rd, Washington, North Carolina, 27889
Drive Time: 45 minute radius

Prepared by Esri
Latitude: 35.59873
Longitude: -77.09334

Population

2010 Total Population	276,505
2018 Total Population	286,683
2023 Total Population	292,913
2018-2023 Annual Rate	0.43%

Households

2018 Median Household Income	\$42,085
2023 Median Household Income	\$48,454
2018-2023 Annual Rate	2.86%

Housing Units by Occupancy Status and Tenure	Census 2010		2018		2023	
	Number	Percent	Number	Percent	Number	Percent
Total Housing Units	125,872	100.0%	131,543	100.0%	136,438	100.0%
Occupied	111,975	89.0%	115,666	87.9%	118,041	86.5%
Owner	66,508	52.8%	64,758	49.2%	67,644	49.6%
Renter	45,467	36.1%	50,908	38.7%	50,397	36.9%
Vacant	13,897	11.0%	15,877	12.1%	18,397	13.5%

Owner Occupied Housing Units by Value	2018		2023	
	Number	Percent	Number	Percent
Total	64,759	100.0%	67,645	100.0%
<\$50,000	7,926	12.2%	6,141	9.1%
\$50,000-\$99,999	15,951	24.6%	13,995	20.7%
\$100,000-\$149,999	12,595	19.4%	11,951	17.7%
\$150,000-\$199,999	10,025	15.5%	10,279	15.2%
\$200,000-\$249,999	5,850	9.0%	7,035	10.4%
\$250,000-\$299,999	4,370	6.7%	6,012	8.9%
\$300,000-\$399,999	4,093	6.3%	5,933	8.8%
\$400,000-\$499,999	1,731	2.7%	2,604	3.8%
\$500,000-\$749,999	1,584	2.4%	2,711	4.0%
\$750,000-\$999,999	401	0.6%	712	1.1%
\$1,000,000-\$1,499,999	205	0.3%	239	0.4%
\$1,500,000-\$1,999,999	1	0.0%	1	0.0%
\$2,000,000+	27	0.0%	32	0.0%
Median Value	\$133,753		\$158,442	
Average Value	\$171,595		\$202,088	

Census 2010 Housing Units	Number	Percent
Total	125,872	100.0%
In Urbanized Areas	56,947	45.2%
In Urban Clusters	20,561	16.3%
Rural Housing Units	48,364	38.4%

Data Note: Persons of Hispanic Origin may be of any race.
Source: U.S. Census Bureau, Census 2010 Summary File 1.

August 02, 2018